

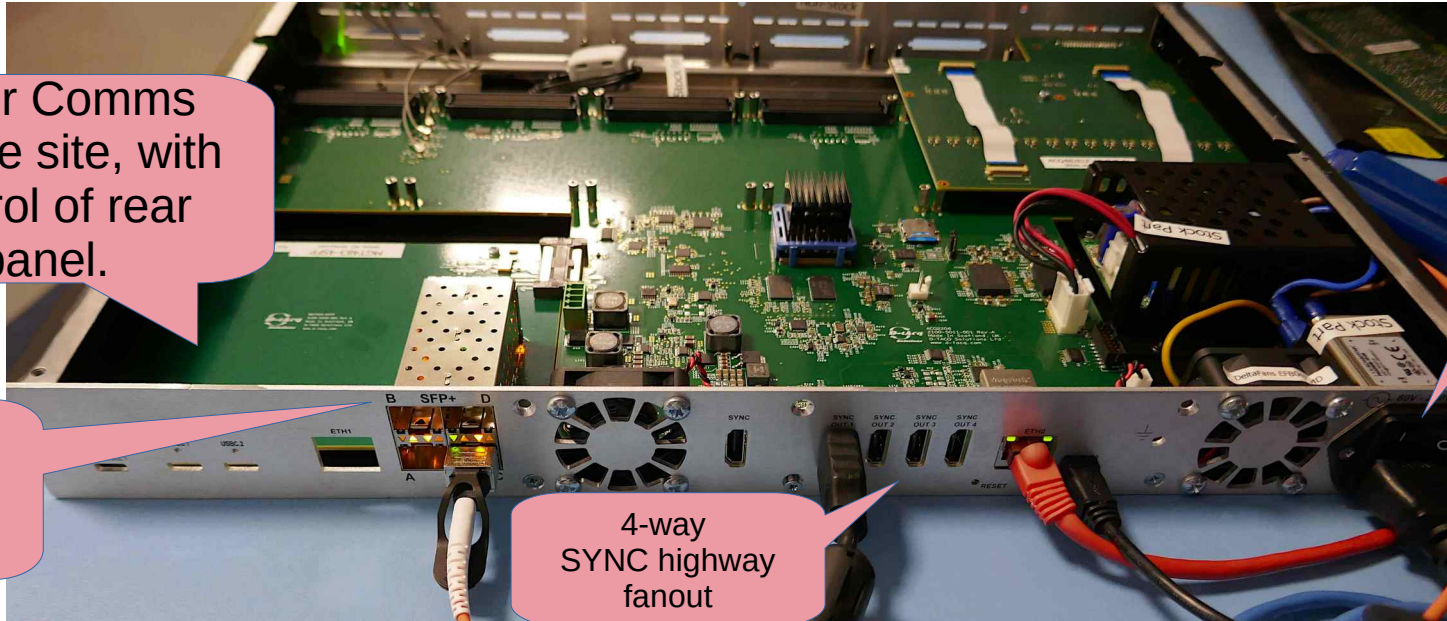
Introducing ACQ2206

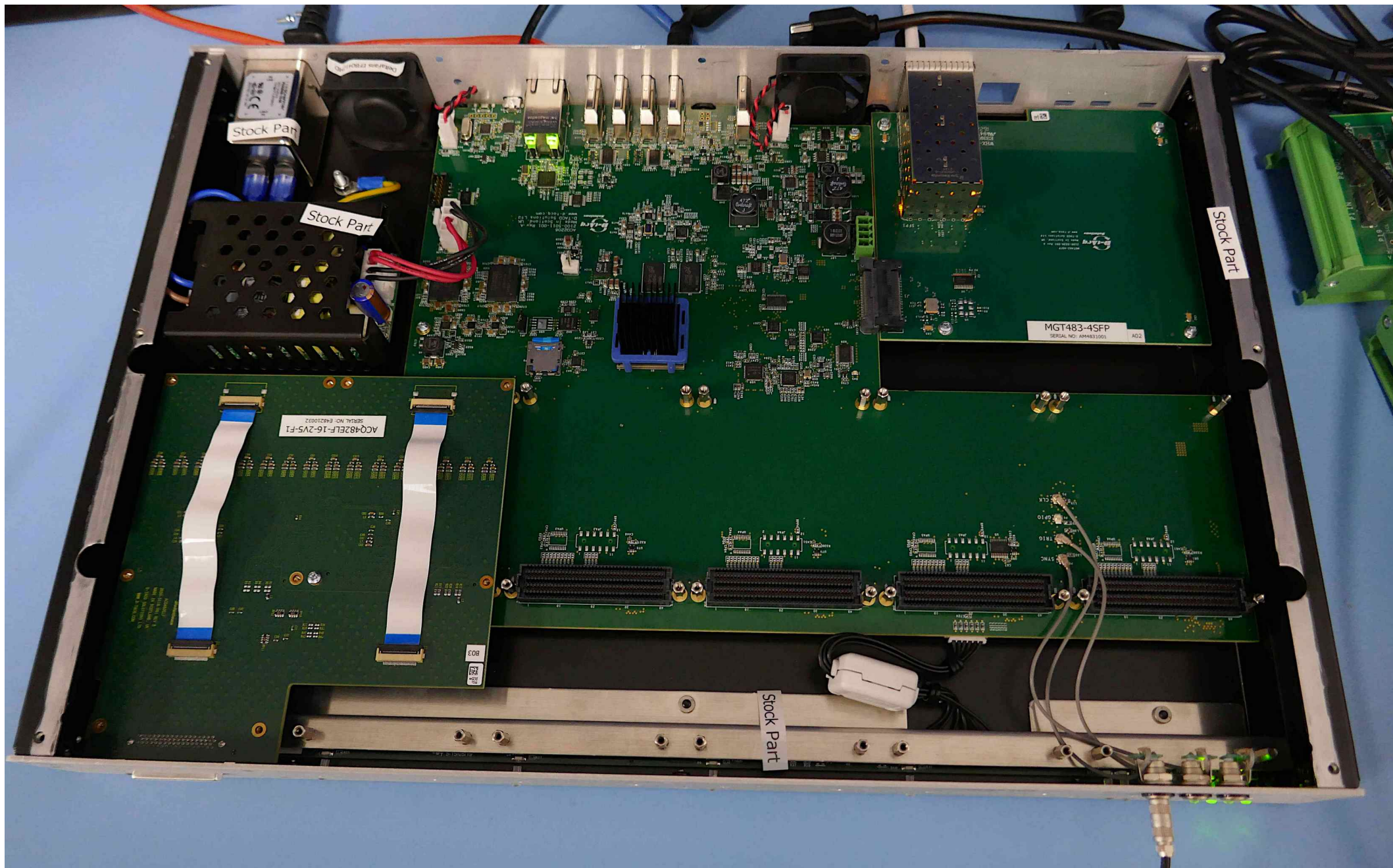
Larger Comms module site, with control of rear panel.

Mains Power Inside

10Gbps MGT links

4-way SYNC highway fanout





Stock Part

Stock Part

Stock Part

Stock Part

ACQ482ELF-16-2V5-F1
SERIAL NO. E48210032

MGT483-4SFP
SERIAL NO. AM4831001
A03

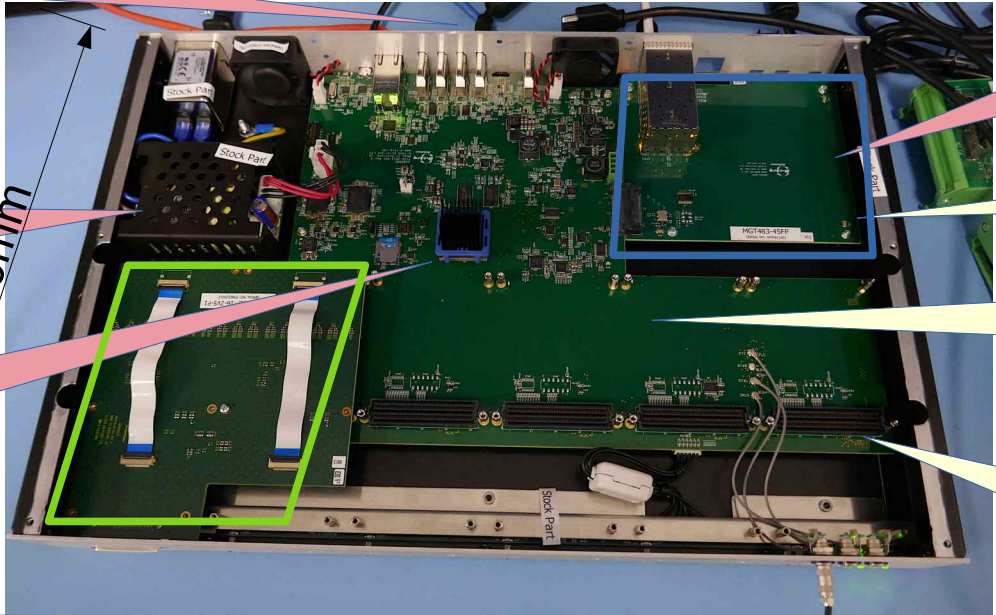
DH-Double Height (2U) Option



Compatible with all existing FP.



Compare ACQ2106



4-way SYNC highway fanout

Mains Power Inside

10Gbps MGT links

Larger Comms module site, with control of rear panel.

MGT483 Quad Comms fitted

ACQ2206
NEW

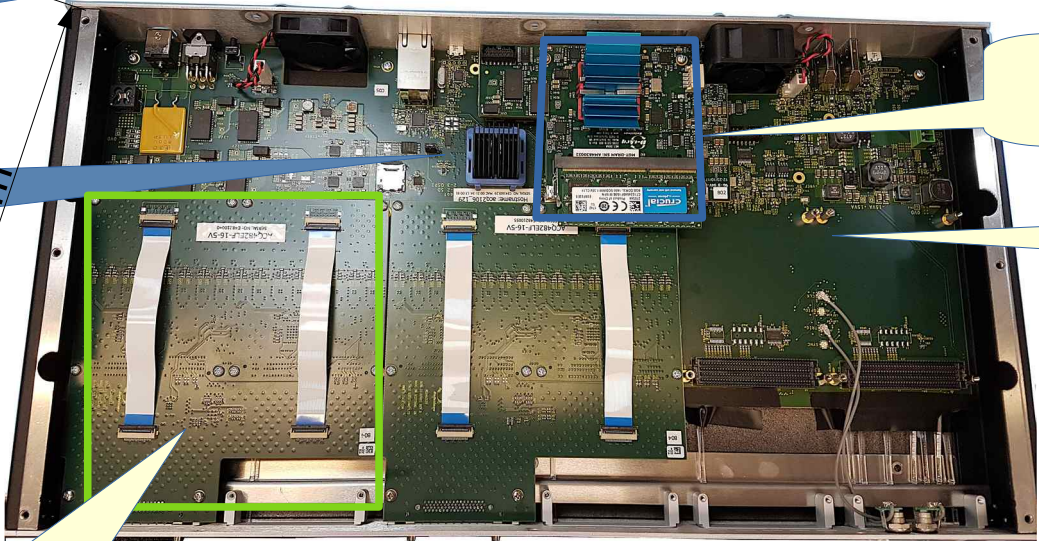
6 Payload Sites
As Before

Requires ext mains brick

6 Gbps MGT links

MGTDRAM8 Comms Module

ACQ2106



ACQ482 Double Width ELF module fitted in both cases

ACQ2106 vs ACQ2206 Comparison Table

Item	ACQ2106	ACQ2206
Dimension	19" x 1U x 240mm	19" x 1U x 300mm
AC Power	external brick	internal
FPGA	ZYNQ7030 FBG	ZYNQ7030 FFG
Memory, Network	1GB DRAM ETH 1000T	1GB DRAM ETH 1000T
MGT Comms	4x6Gbps	4x10Gbps
Passive Comms module	MGT482 2xAurora/PCIe, 400MB/s 1xHU DP (Ethernet 100LX), 100MB/s 1xWR Precision Timing	MGT483 Aurora/PCIe, 400MB/s 1xEth 10GB/UDP (HU DP) target, 500MB/s 1xWR Precision Timing
Active Comms module	MGTDRAM8 (deprecated) Kintex. 8GB DRAM module IN: 2000MB/s OUT: 40MB/s (too slow)	MGT508 XCU4CG 16/32GB DRAM Module IN: > 2000MB/s OUT: > 100MB/s Interfaces: 1 x Eth 1000T TCP : 40MB/s sustained 1 x Eth 2.5G / UDP (HU DP) >100MB/s 1 x Eth 10G / UDP (HU DP), target 500MB/s
Availability	At minimum, through 2023	ACQ2206: From Q2 2023 MGT508: From Q3 2023
Recommendation	Still recommended for applications where throughput is <100MB/s (eg ACQ435). It's cheaper and more available	Recommended for new designs, especially for data rates > 100MB/s Limited availability in 2023.